



INDOFINE Chemical Company, Inc.

121 Stryker Lane, Bldg. 30, Suite 1 • Hillsborough, NJ 08844 • U.S.A.

Phone: (908) 359-6778 • FAX: (908) 359-1179

website: www.indofinechemical.com

e-mail: chemical@indofinechemical.com

CERTIFICATE OF ANALYSIS

Catalog Number: 06-1221

Product Name: **SPHONDIN**

CAS Number: [483-66-9]

Lot Number: 2111610

Chemical Formula: C₁₂H₈O₄

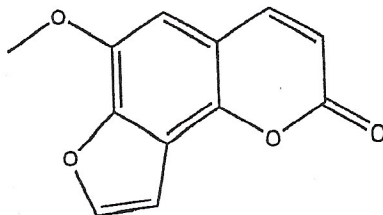
Molecular Weight: 216.19

Appearance: Off-white powder

Loss on drying: 1.5%

Storage: Store in a cool, dry place. Protect from light.

Purity(HPLC): 99.74%



Prepared by:
Ramesh Mandadi
Ramesh Mandadi
Director of Operations

Reviewed and Approved by:
Sujata Moton
Sujata Moton
VP



INDOFINE Chemical Company, Inc.

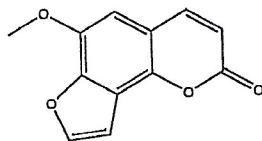
121 Stryker Lane, Bldg. 30, Suite 1 • Hillsborough, NJ 08844 • U.S.A.

Phone: (908) 359-6778 • FAX: (908) 359-1179

website: www.indofinechemical.com

e-mail: chemical@indofinechemical.com

HPLC ANALYSIS

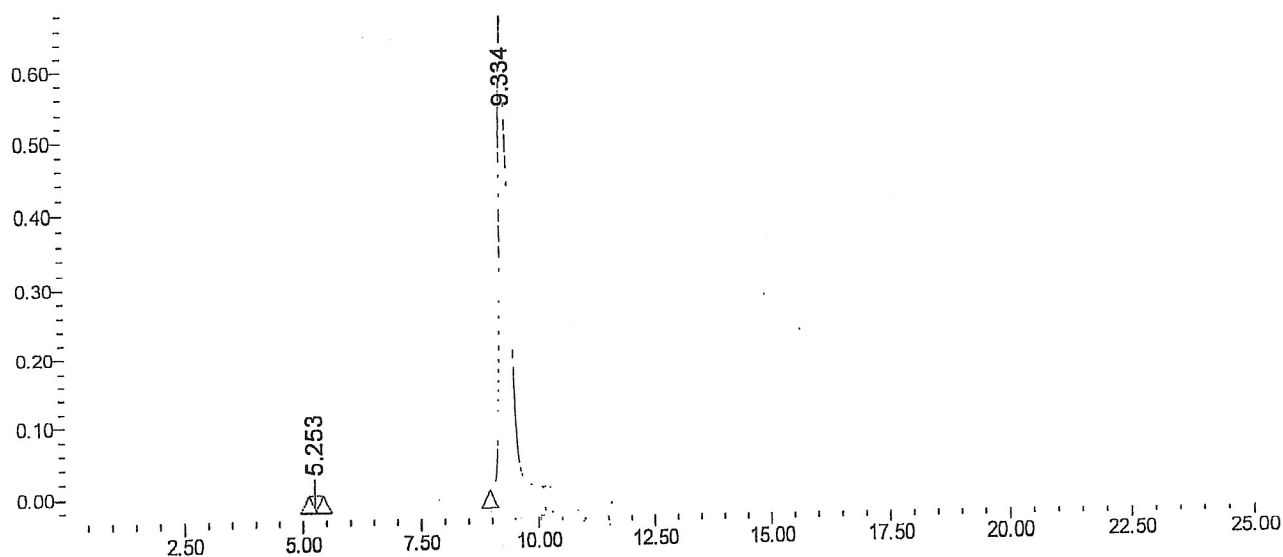


Catalog No.: 06-1221
Product Name: Sphondin
Lot No.: 2111610

SAMPLE INFORMATION

Sample Name:	sphondin	Acquired By:	prf01
Sample Type:		Sample Set Name:	
Vial:	25	Acq. Method Set:	sphondin
Injection #:	1	Processing Method:	sample
Injection Volume:	10.00 ul	Channel Name:	250.0
Run Time:	25.0 Minutes	Proc. Chnl. Descr.:	PDA 250.0

Auto-Scaled Chromatogram



Peak Results

	RT	Area	% Area	USP	USP
1	5.253	24510	0.26	3363	10449.17
2	9.334	9234911	99.74	651820	14.19

Prepared by:
Ramesh Mandadi
Ramesh Mandadi
Director of Operations

Reviewed and Approved by:
Sujata Moton
Sujata Moton
VP